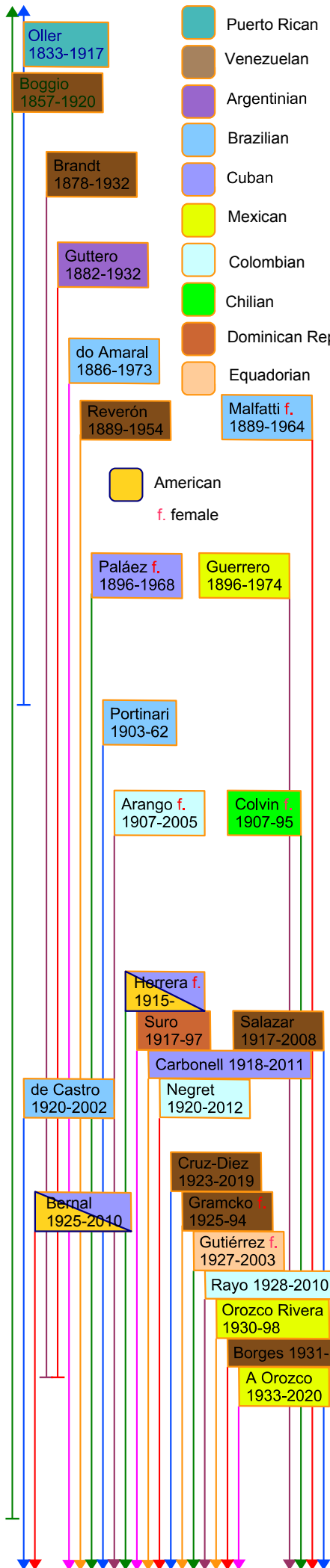


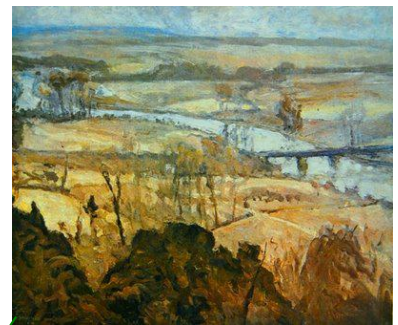
# SOUTH AMERICA



1870  
1875  
1880  
1885  
1890  
1895  
1900  
1905  
1910  
1915  
1920  
1925  
1930  
1935  
1940



**Oller**  
*La Escuela del Maestro Rafael Cordero*  
1890-92



**Boggio**  
*Bridge Over a River* 1910



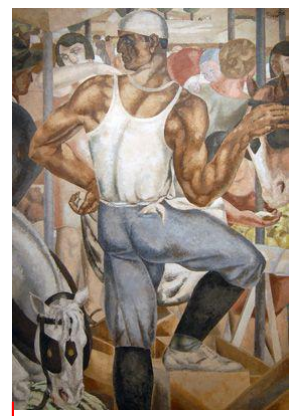
**Malfatti**  
*Tropical* c.1916



**Reverón**  
*The Cave* 1920



**Brandt**  
*Dolls* 1927



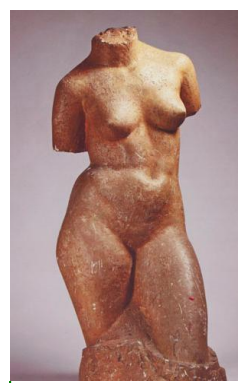
**Guttero**  
*The Market* 1929



**do Amaral**  
*Second Class*  
1933



**Portinari**  
*The Gold Mine*  
1938



**Colvin**  
*Torso* 1939



**Guerrero**  
*Mural for the municipality of Chillán*  
1940